



"Success for All"

Morgan County Schools

136 Flat Fork Road, Wartburg, TN 37887

Chris Rogers, Technology Coordinator

Central Office Phone: (423) 346-6214 x 236

Fax: (423) 346-5583

<http://mcsed.net>

RFP#1001-Wiring

Form 470: 346560001214307

Form 470 Posted: Wednesday, February 5, 2014

Form 470 Allowable Contract Date (ACD): March 5, 2014

Bidding Notes: For additional information, contact Chris Rogers at rogers@mcsed.net

Bid Request:

Morgan County Schools is accepting bids for the termination and wiring of CAT6 and Fiber Installation at eight locations within the district.

Bidding Instructions/Deadline:

Bids can be emailed to Chris Rogers at rogersc@mcsnet.ed or mailed to:
Morgan County School District

ATTN: Chris Rogers
136 Flat Fork Road
Wartburg, TN 37887

Bids must be received by **March 6, 2014 at 4:00 PM.**

Bid Requirements:

- Vendor must be willing to participate in the FCC E-Rate Program and is responsible for complying with all rules and regulations of this program, including providing invoices to the Schools & Libraries Division in order for the school system to receive appropriate discounts.
- Must be able to provide three references.
- Response must reference this Form 470.
- We will not respond to general solicitations, generic emails or spam. We will respond to all specific questions.
- Bidder must have a valid SPIN. Please include this SPIN on your response.
- Bidder must agree to participate in the E-rate Program for the corresponding funding year.
- Bidder is expected to provide Lowest Corresponding Price per E-rate rules.
- Please include estimated taxes and fees in the quote.
- Bidder will be automatically disqualified if the District determines that the bidding company has offered any employee of the District any individual gift of more than \$20 or gifts totaling more than \$50 within a 12 month period.

- All contracts awarded will be contingent upon E-rate funding and final board approval unless otherwise noted. The applicant may choose to do all or part of the project upon funding notification.
- Services and equipment can be delivered from July 1, 2014 thru September 30, 2016.

Selection Criteria:

Morgan County Schools reserves the right to reject any or all proposals, and to select the bid that it believes offers the best overall benefit to the school system. Along with price, special consideration will be given to quality of service. In addition, special consideration will be given to vendors that are stable and have established themselves in the market.

Award of the bid will be based on the following criteria:

- A. Cost – 40%
- B. Eligibility of proposed solution to be funded through the USAC Schools and Libraries E-Rate program – 10%
- C. Adequacy of the proposed design – 20%
- D. Bidder's qualifications, demonstrated ability to perform the work, and references – 20%
- E. Proposed date of completion – 10%

Proposals are requested on products that are the functional equivalent or better than the brands listed below. **References to brand names, trade names, model numbers, or other descriptions are made to establish a required level of quality and functional capabilities and are not intended to exclude other manufacturers.** Specific names of products listed below are intended to convey the type of equipment sought.

Bidders must be licensed contractors in compliance with the provisions of the Tennessee Code Annotated (TCA).

Bidders must agree to enter into this contract utilizing the Service Provider Invoicing (SPI) (Form 474) method of payment. If approved, the total amount of E-Rate funds committed to this project may cover up to 90% of the total cost. The Morgan County School District will only be responsible for the remaining percentage that E-Rate does not cover.

Scope of Work

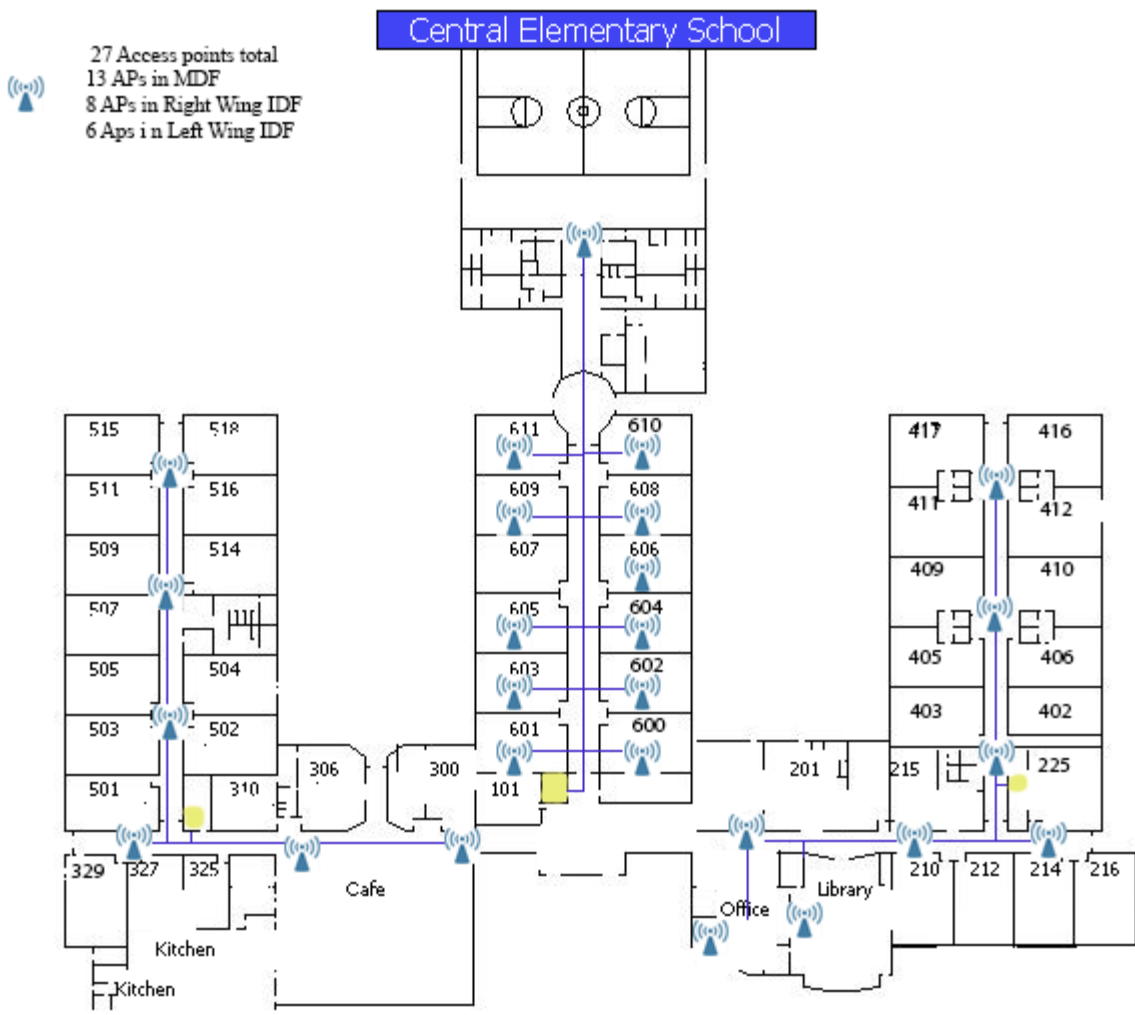
Fiber:

- Fiber Cable must be Armored Grade OM3 10GB Fiber with 12 strands.
- Warranty on installation/Cable needs 25 Years
- Installer must show proof of manufacture certifications
- Hangers must be installed when needed
- Tested and certified and provide results
- Work may be done during or after school hours
- If needed, fire protection caulking installed
- All fiber optic cabling will be terminated with laser optimized LC connectors and placed in rack mounted LIU's at each end

- Two OM3 LC/LC 10 Gig fiber optic patch cables will be furnished and patched into each backbone
- Vender shall furnish and install ceiling mounted J-Hook cable supports at five foot interval
- Installations will be from IDFs to MDF
 - 2 IDF to MDF Fiber installs at Central Elementary School
 - 1 IDF to MDF Fiber installs at Central Middle School
 - 2 IDF to MDF Fiber installs at Central High School
 - 3 IDF to MDF Fiber installs at Coalfield School
 - 3 IDF to MDF Fiber installs at Oakdale School
 - 3 IDF to MDF Fiber installs at Sunbright School
 - 1 IDF to MDF Fiber install at MCCTC
 - 1 MDF at MCCTC to 1 MDF Central Office Fiber install

Cat6 Cable and AP install:

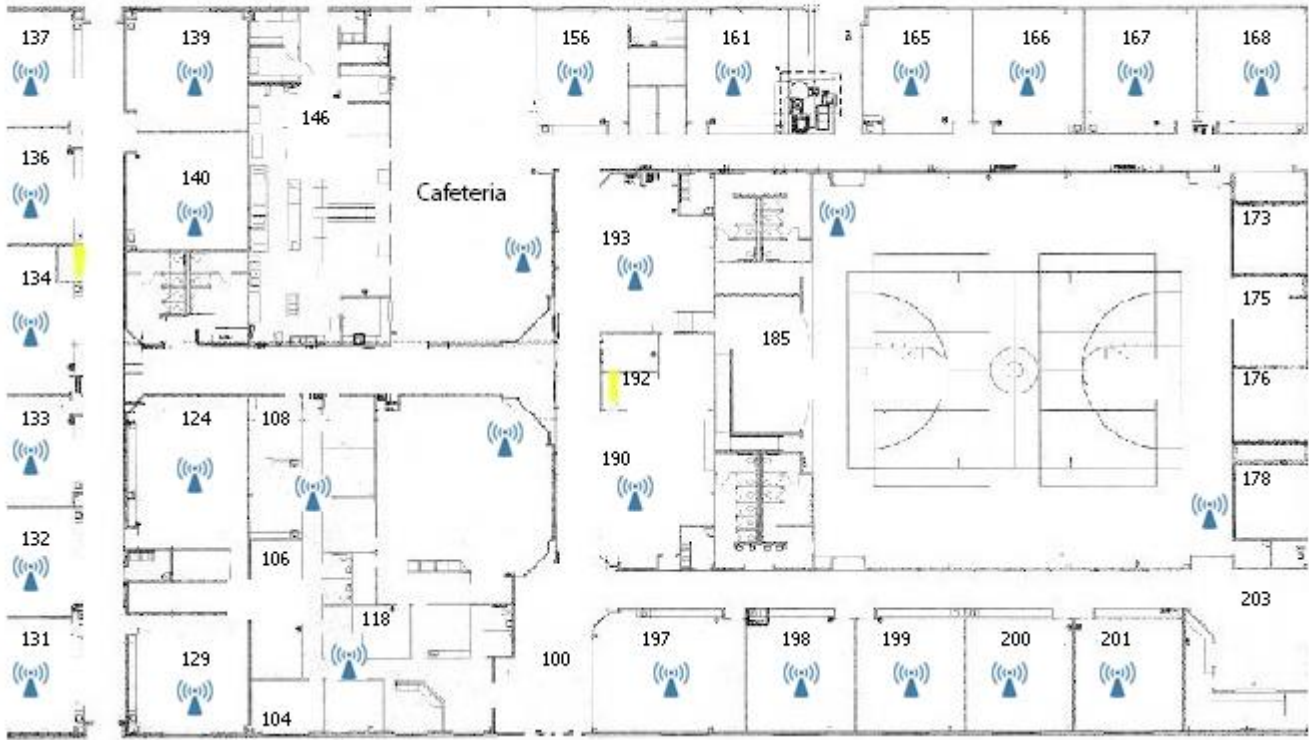
- CAT6 install must be Warranted for 25 years
- Installer must show proof of manufacture certification
- Hangers must be installed when needed
- Tested and certified and provide results
- Work may be done during or after hours
- If needed, Fire Protection caulking installed
- Installation should include termination at both ends with Patch Panel installation, and wire management.
- Provide documentation on AP to include location, drop # and MAC address.
- Mount and patch AP
- Each AP will require a new CAT6 cable install
- Remove non-used cable
- Provide CAT6 Patch Cable on both ends.
- Relocate APs from Hallways to Classrooms
- Installation will be at
 - 22 new AP – relocate 11 for Central Elementary
 - 15 new AP for Sunbright
 - 11 new AP- relocate 5 for Oakdale
 - 12 new AP for Coalfield
 - 10 new AP – Relocate 8 for MCCTC



Yellow= IDF Left wing and Right Wing
 Yellow = MDF (Beside RM 601)
 Access Points moved in Hallways to Rooms
 Longest CAT6 Drops =170 FT
 Fiber from Left IDF to MDF is ~ 175 FT
 Fiber from Right IDF to MDF is ~ 240 FT

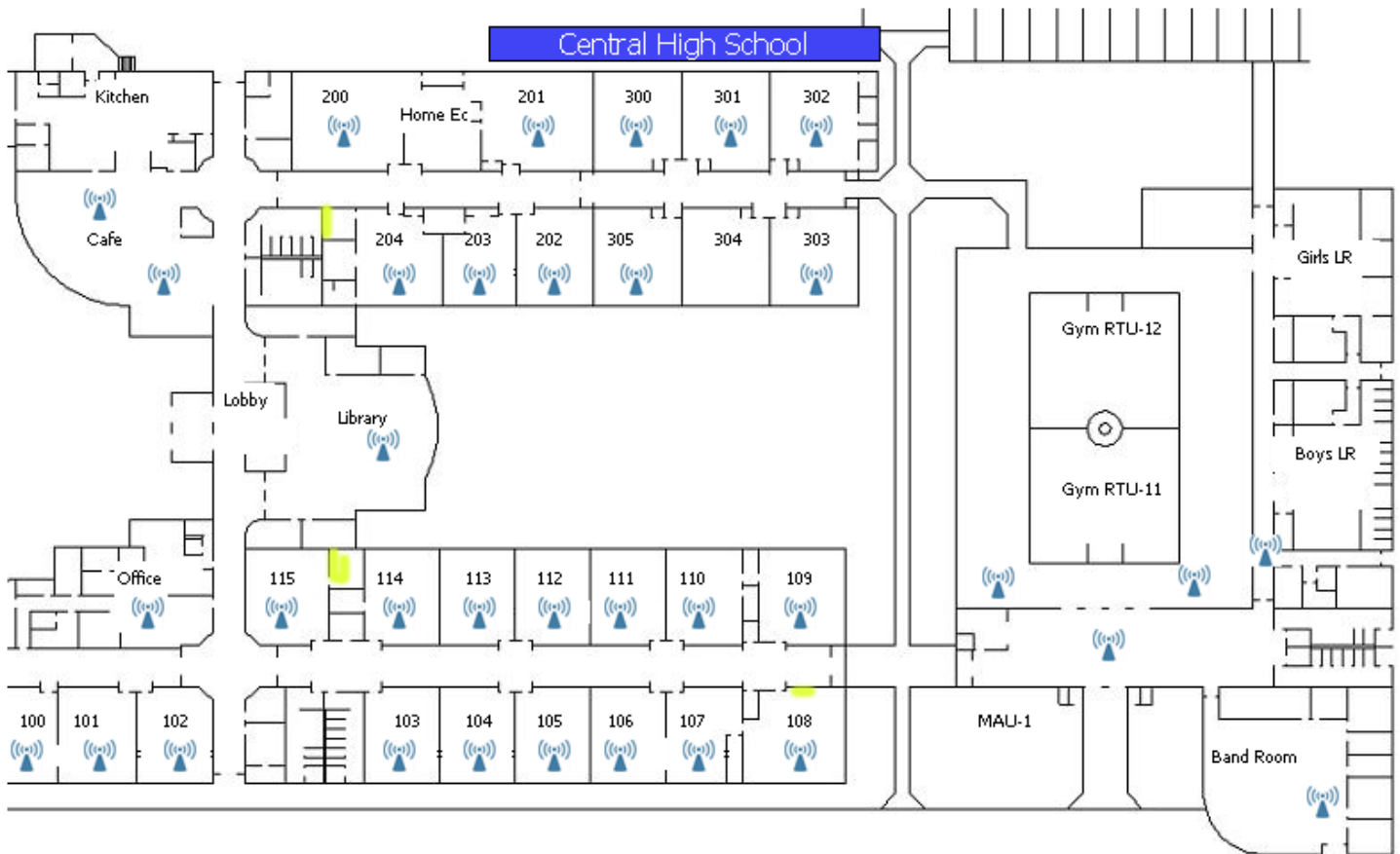
Note: All Drop Ceiling

Central Middle School



Yellow= IDF (Beside RM 134)
Yellow = MDF (Beside RM 192)
Fiber from IDF to MDF is ~ 180 Ft

Note: Catwalk with Cable tray can be used in school.



Yellow= IDF Left wing (Beside RM 204) and Right Wing (In RM 108)

Yellow = MDF (In RM115)

Fiber from Left IDF to MDF is ~ 270 FT

Fiber from Right IDF to MDF is ~ 220 FT

Note: Drop Ceiling.



Yellow= IDF MS (RM 209) , IDF Elem (beside RM 120), IDF HS(RM 308)

Yellow = MDF (Library)

AP added in RM 101-114

Longest CAT6 Drops = 250 FT

Fiber from MS IDF to MDF is ~240 FT

Fiber from HS IDF to MDF is ~ 290 FT

Fiber from Elem IDF to MDF is ~310 FT

Note: Drop Ceiling for Fiber runs and Catwalk in Elementary Section of School.



Yellow= MS IDF (Beside RM 207), Elem IDF (Room 315), HS IDF (RM 403)

Yellow = MDF (Guidance, Beside RM 106)

Access Points moved in Hallways to Rooms

New Access Points installed rooms 319-304, 207 and 205

Longest CAT6 Drops = ~100 Ft

Fiber from MS IDF to MDF is ~ 210 FT

Fiber from Elem IDF to MDF is ~ 380 FT

Fiber from HS IDF to MDF is ~ 220 FT

Note: No Drop Ceiling, JHooks installed already in most places.

Sunbright School



Yellow=Right Wing IDF (RM 262), Left IDF (Room 235), Basement IDF (RTU-2)

Yellow = MDF (Guidance, Beside RM 106)

New Access Points installed rooms 277,275,274,272,270,244,242,240,238,236,234,270,241,237,233

Longest CAT6 Drops = 220 FT

Fiber from Right IDF to MDF is ~ 240 FT

Fiber from Left IDF to MDF is ~ 220 FT

Fiber from Basement IDF to MDF is ~ 190 FT

Note: Drop Ceiling

MCCTC: NO image available

Fiber from Upstairs IDF to Downstairs MDF ~ 100 FT

Fiber from Downstairs to CO MDF ~350 Ft

Longest CAT6 Drop = 185 Ft

Question and Answers